

FME Xtreme B06

Fife Milton Edgewood SC

Milton, WA

B06 total strength=691

attack=1.05 defense=0.45

fall league = NPSL Div 2 (06) U11, NPSL Div 3

alt names used:

FME Xtreme 06

FME Xtreme B06

Venues played:

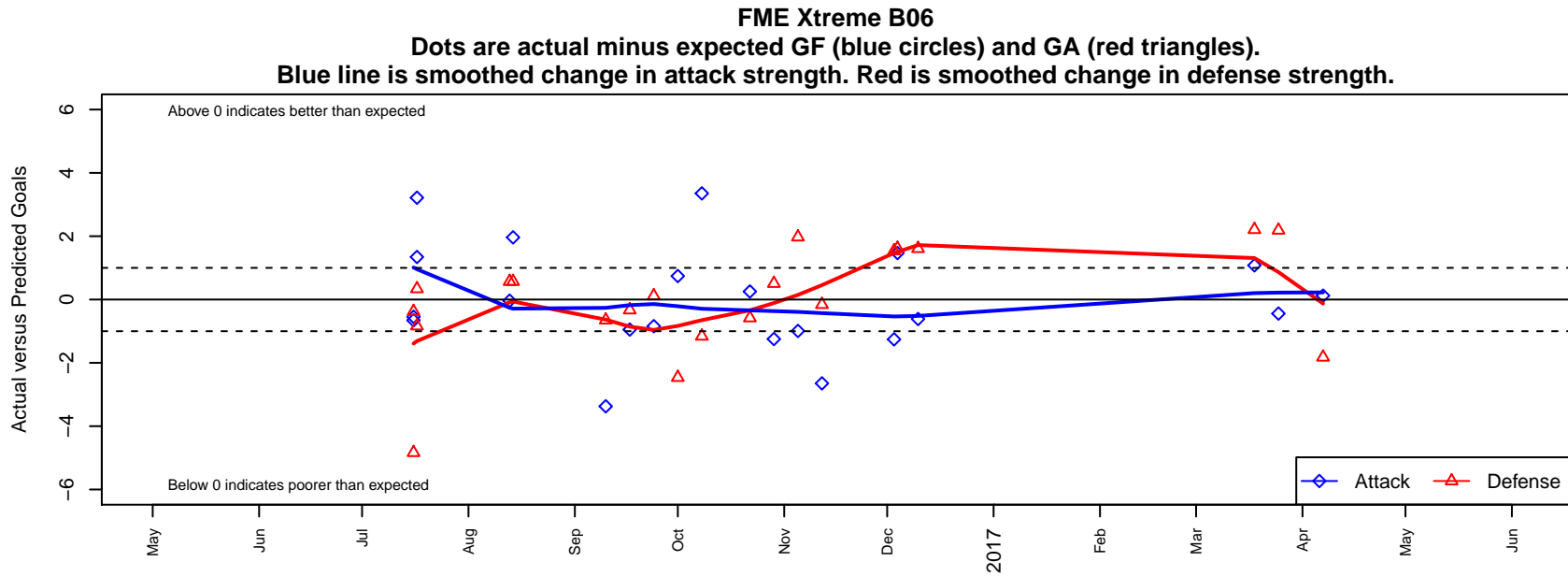
2016 KITG BU11 White

2016 Blast Off B2006 B

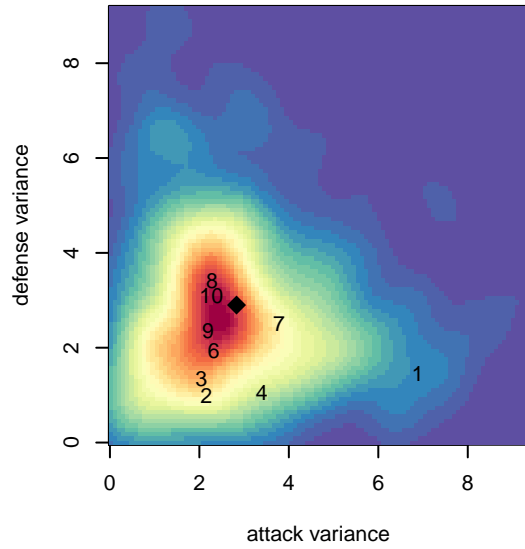
2016 NPSL Division 3 (06) U11

2016 NPSL Division 2 (06) U11

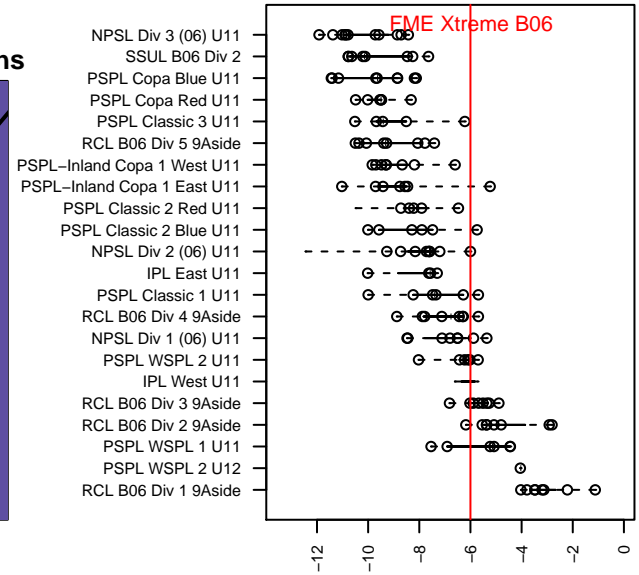
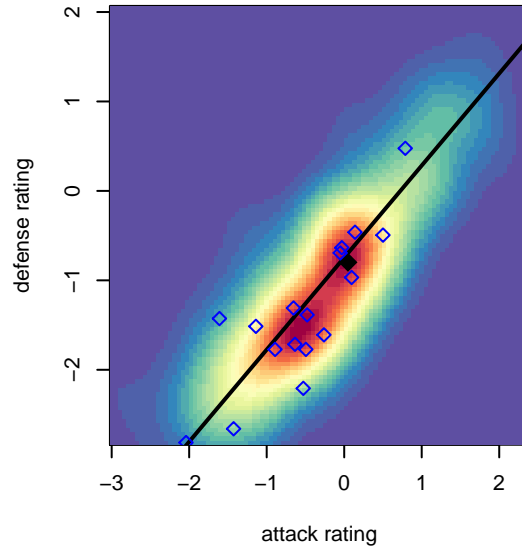
2016 WYS Presidents Cup B06 Division 2



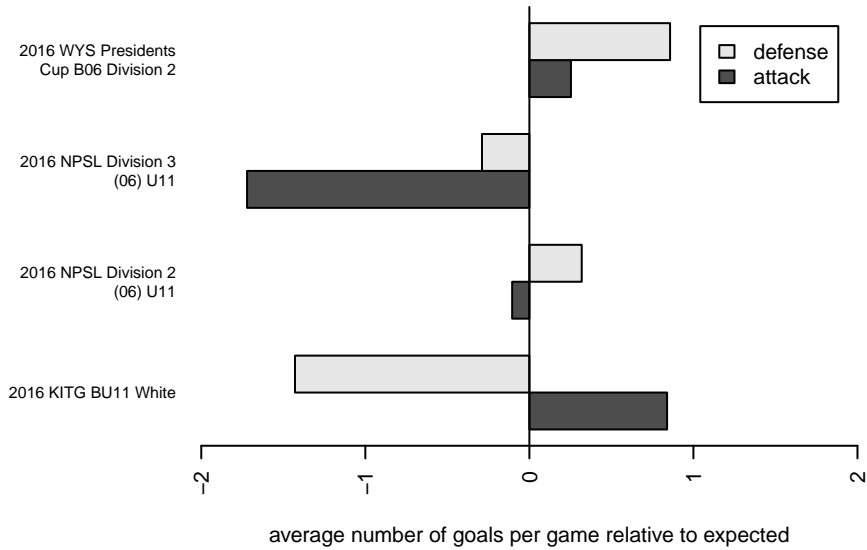
**attack and defense variance (black dot)
relative to other teams
and top 10 in region**



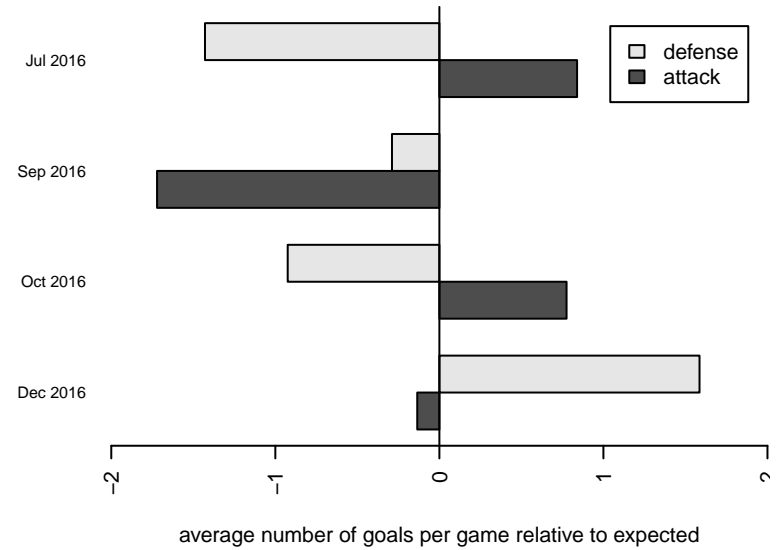
**attack and defense rating
relative to others at age
and all opponents in last 13 months**



Performance relative to 13 month average



Performance relative to 13 month average



date	home		away		venue	pred.home	pred.away
2017-04-07	Eastside FC White B06	6	FME Xtreme B06	2	2016 WYS Presidents Cup B06 Division 2	4.18	1.88
2017-03-25	FME Xtreme B06	1	Kitsap Alliance FC Red B06	1	2016 WYS Presidents Cup B06 Division 2	1.44	3.19
2017-03-18	PacNW Blue B06	1	FME Xtreme B06	4	2016 WYS Presidents Cup B06 Division 2	3.21	2.92
2016-12-10	Mercer Island FC Sounders B06	0	FME Xtreme B06	6	2016 NPSL Division 2 (06) U11	1.61	6.62
2016-12-04	FME Xtreme B06	4	BIFC Blue B06	1	2016 NPSL Division 2 (06) U11	2.53	2.61
2016-12-03	NSC Skilz White B06	0	FME Xtreme B06	3	2016 NPSL Division 2 (06) U11	1.54	4.26
2016-11-12	FME Xtreme B06	2	Storm King B06	1	2016 NPSL Division 2 (06) U11	4.65	0.84
2016-11-05	Seattle United S White B06	0	FME Xtreme B06	4	2016 NPSL Division 2 (06) U11	1.97	4.99
2016-10-29	FME Xtreme B06	3	Bellevue United Select B06	0	2016 NPSL Division 2 (06) U11	4.25	0.51
2016-10-22	FME Xtreme B06	4	NSC Kingsmen White B06	2	2016 NPSL Division 2 (06) U11	3.75	1.42
2016-10-08	Storm King B06	2	FME Xtreme B06	8	2016 NPSL Division 2 (06) U11	0.84	4.65
2016-10-01	FME Xtreme B06	5	NSC Skilz White B06	4	2016 NPSL Division 2 (06) U11	4.26	1.54
2016-09-24	FME Xtreme B06	5	IFC Red B06	1	2016 NPSL Division 3 (06) U11	5.84	1.11
2016-09-17	Mercer Island FC White B06	1	FME Xtreme B06	14	2016 NPSL Division 3 (06) U11	0.67	14.95
2016-09-10	IFC Select White B06	1	FME Xtreme B06	13	2016 NPSL Division 3 (06) U11	0.35	16.37
2016-08-14	Seattle United W Blue B06	2	FME Xtreme B06	4	2016 Blast Off B2006 B	2.57	2.04
2016-08-13	FME Xtreme B06	2	Seattle United W Blue B06	2	2016 Blast Off B2006 B	2.04	2.57
2016-07-17	MRFC Blue B06	1	FME Xtreme B06	10	2016 KITG BU11 White	1.34	6.78
2016-07-17	Giants B06	6	FME Xtreme B06	2	2016 KITG BU11 White	5.16	0.66
2016-07-16	FME Xtreme B06	10	Kent City Black B06	2	2016 KITG BU11 White	10.55	1.62
2016-07-16	FME Xtreme B06	0	Giants B06	10	2016 KITG BU11 White	0.66	5.16